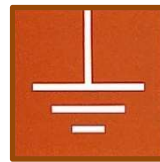


Travaux Pratiques Électrotechnique

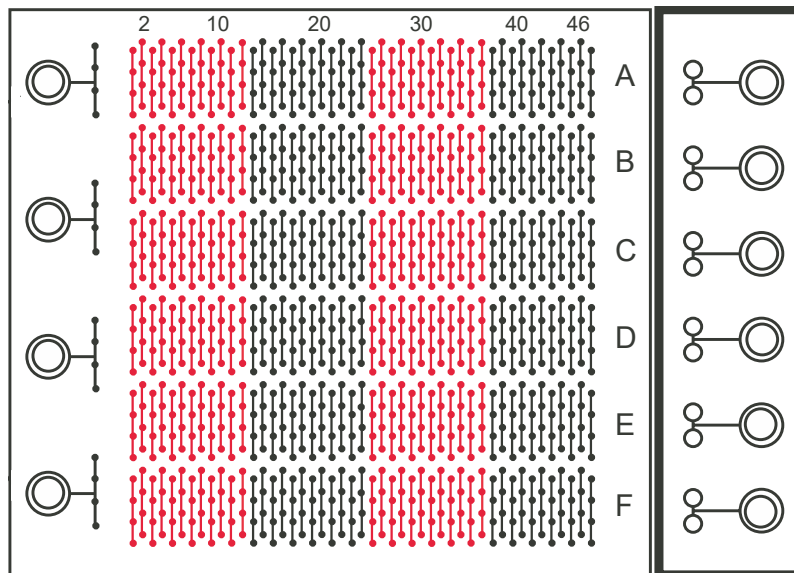


Génie mécanique
Bachelor semestre 1

Objectifs



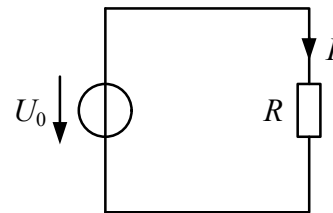
- Familiarisation avec deux nouveaux appareils :
 - Alimentation de laboratoire **HMP2030**
 - Multimètre **AM-530-EUR**
- Familiarisation avec la plaque **Hirschman** :



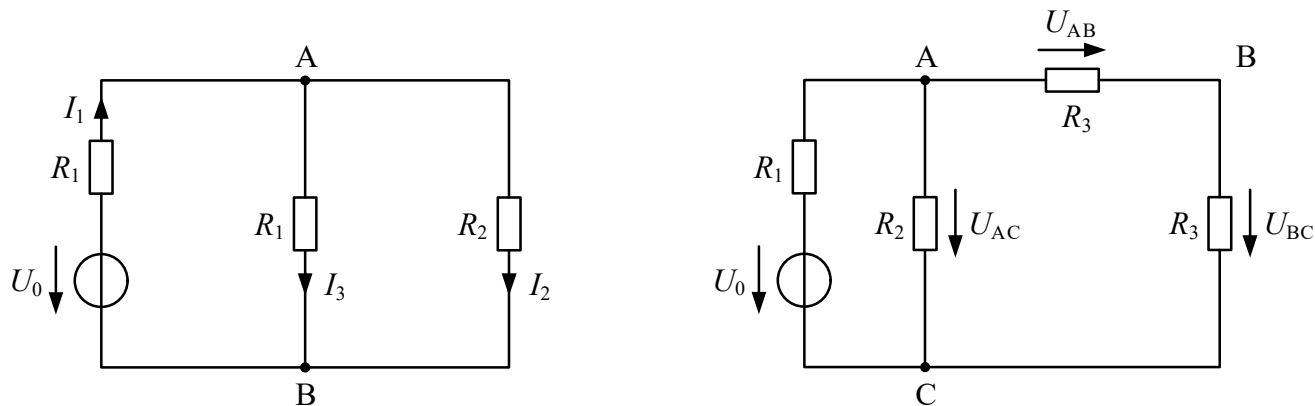
Objectifs



- Vérification de la **loi de Ohm**



- Vérification des **lois de Kirchhoff**



Alimentation



Rouge : Potentiel positif

Bleu : Potentiel négatif

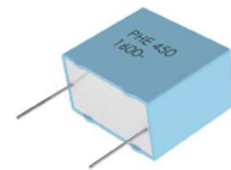
Multimètre



Rouge : Potentiel positif

Noir : Potentiel négatif

Composants

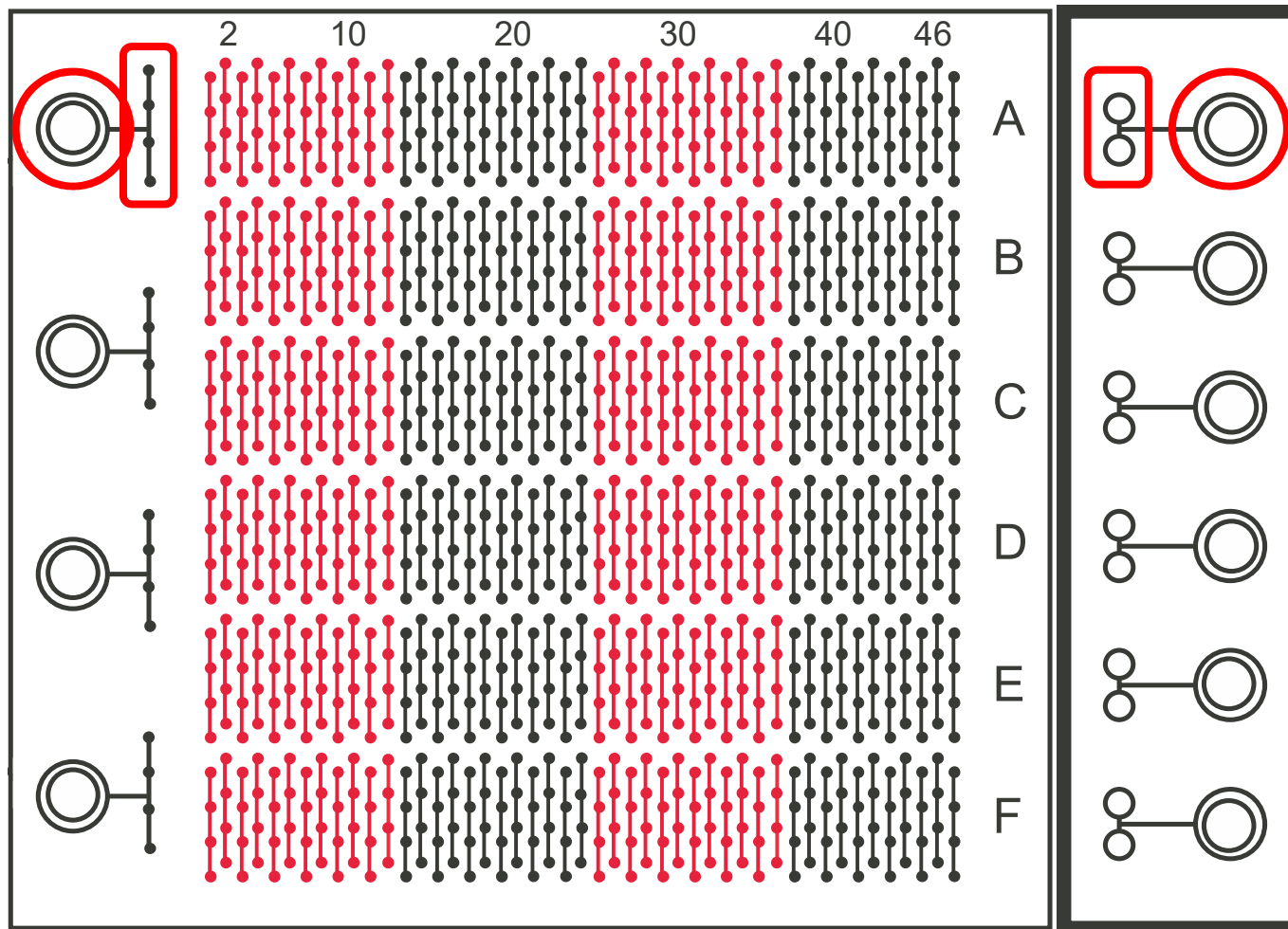


- 6 Résistances
- 1 Condensateur
- 1 Inductance
- Utiliser le code des couleurs pour identifier les résistances

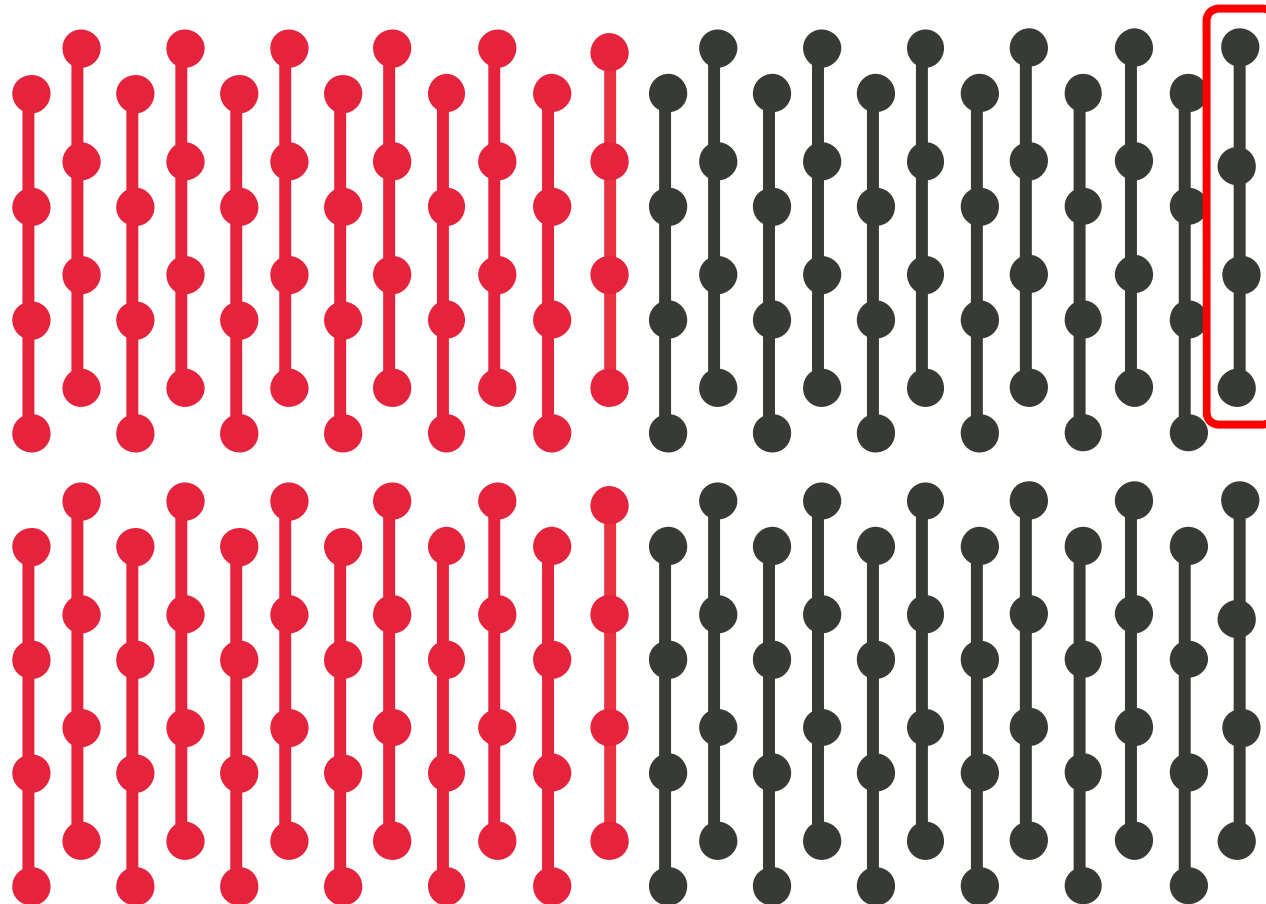
4 Band Resistor

	1st Digit	2nd Digit	Multiplier	Tolerance
Black		0	x1	
Brown	1	1	x10	± 1%
Red	2	2	x100	± 2%
Orange	3	3	x1K	± 3%
Yellow	4	4	x10K	± 4%
Green	5	5	x100K	± 0.5%
Blue	6	6	x1M	± 0.25%
Violet	7	7	x10M	± 0.10%
Grey	8	8	x100M	± 0.05%
White	9	9	x1G	
Gold			÷ 10	± 5%
Silver			÷ 100	± 10%

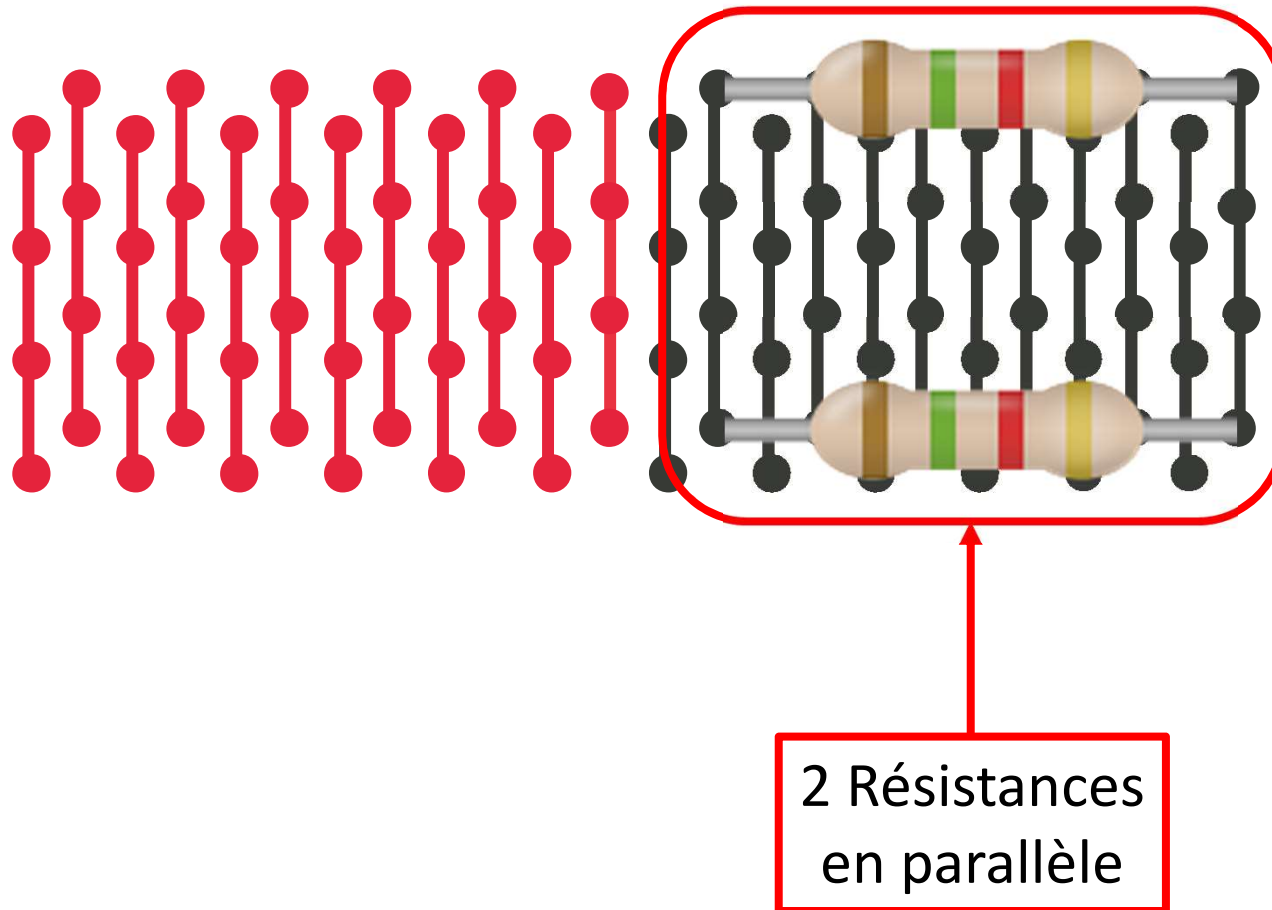
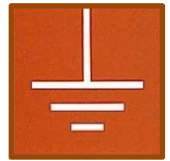
Plaque Hirschman



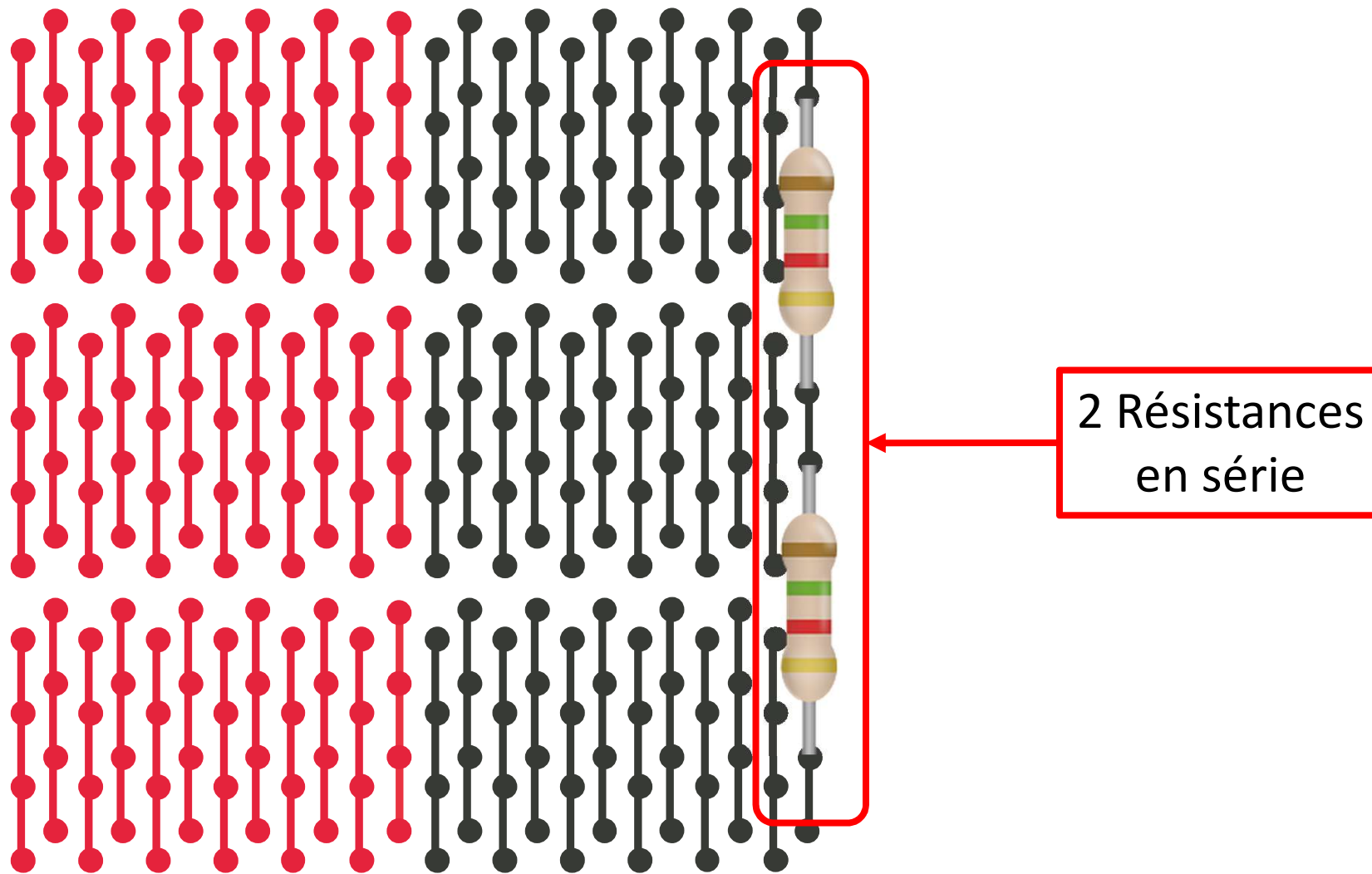
Plaque Hirschman



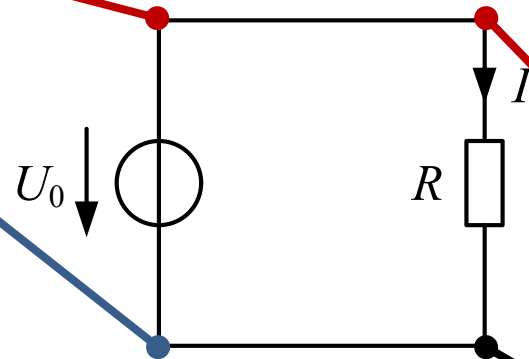
Plaque Hirschman



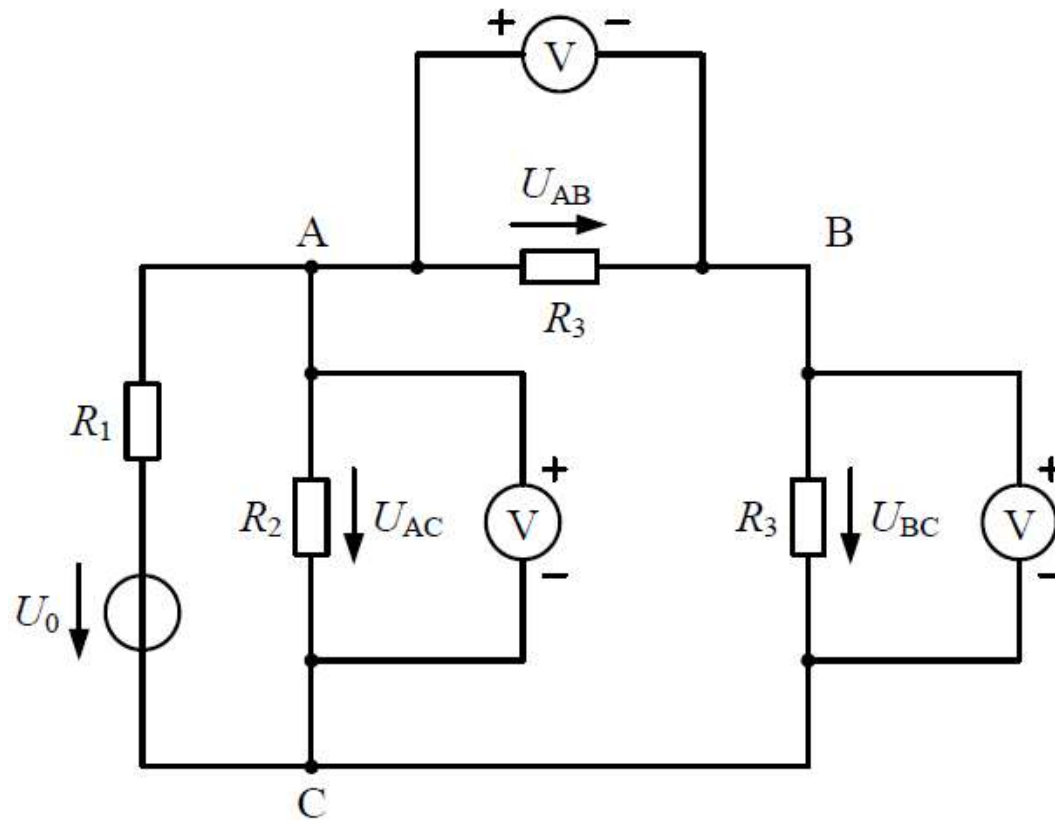
Plaque Hirschman



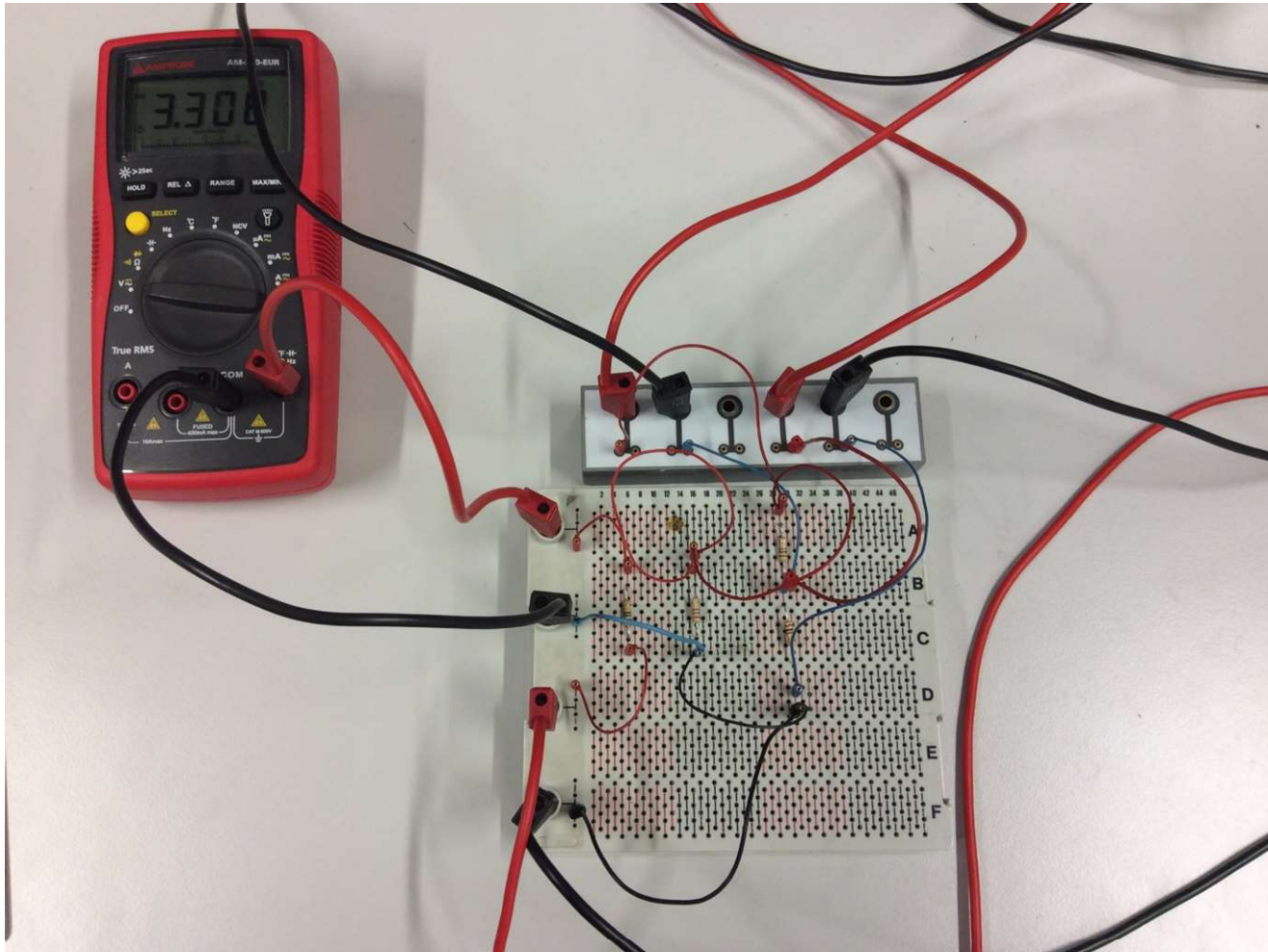
Montage 1



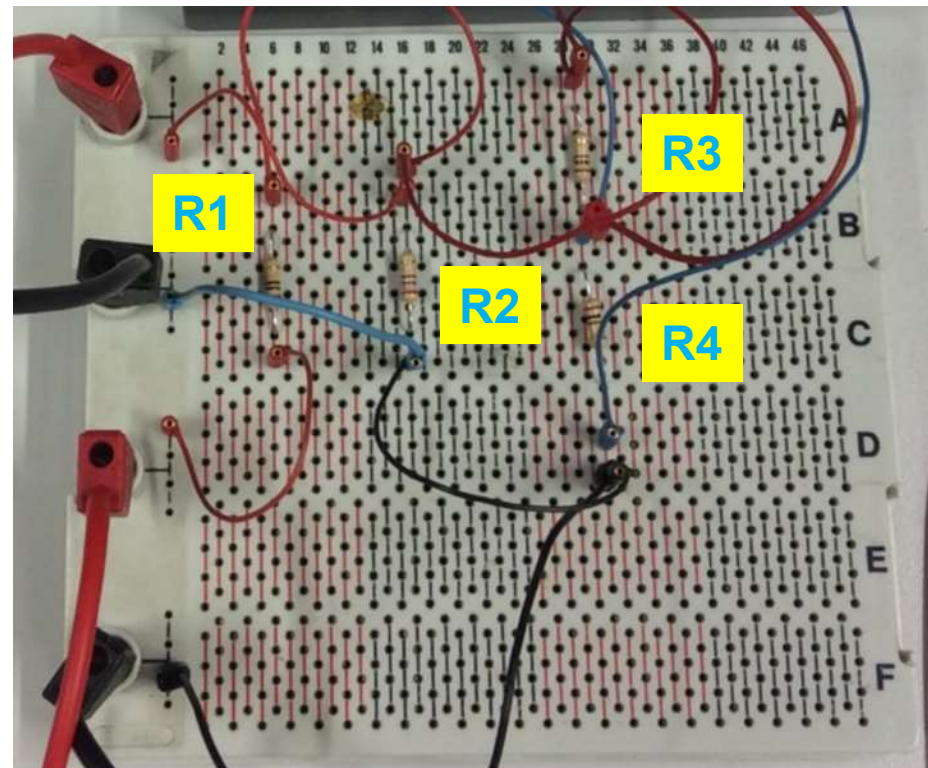
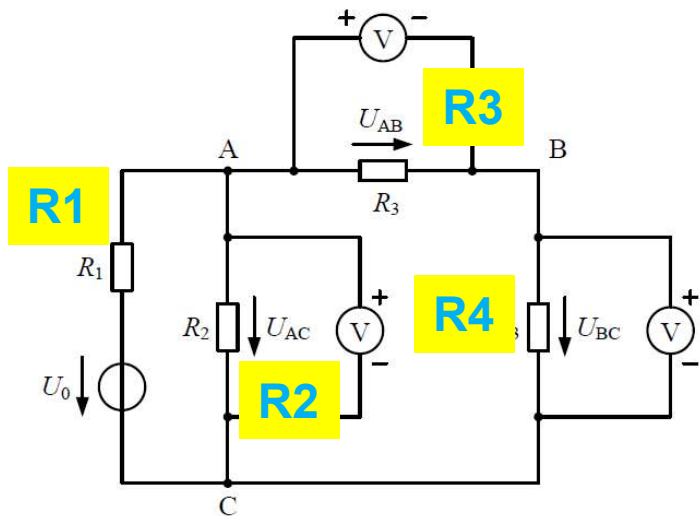
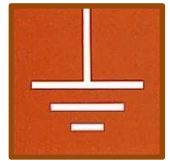
Montage 3



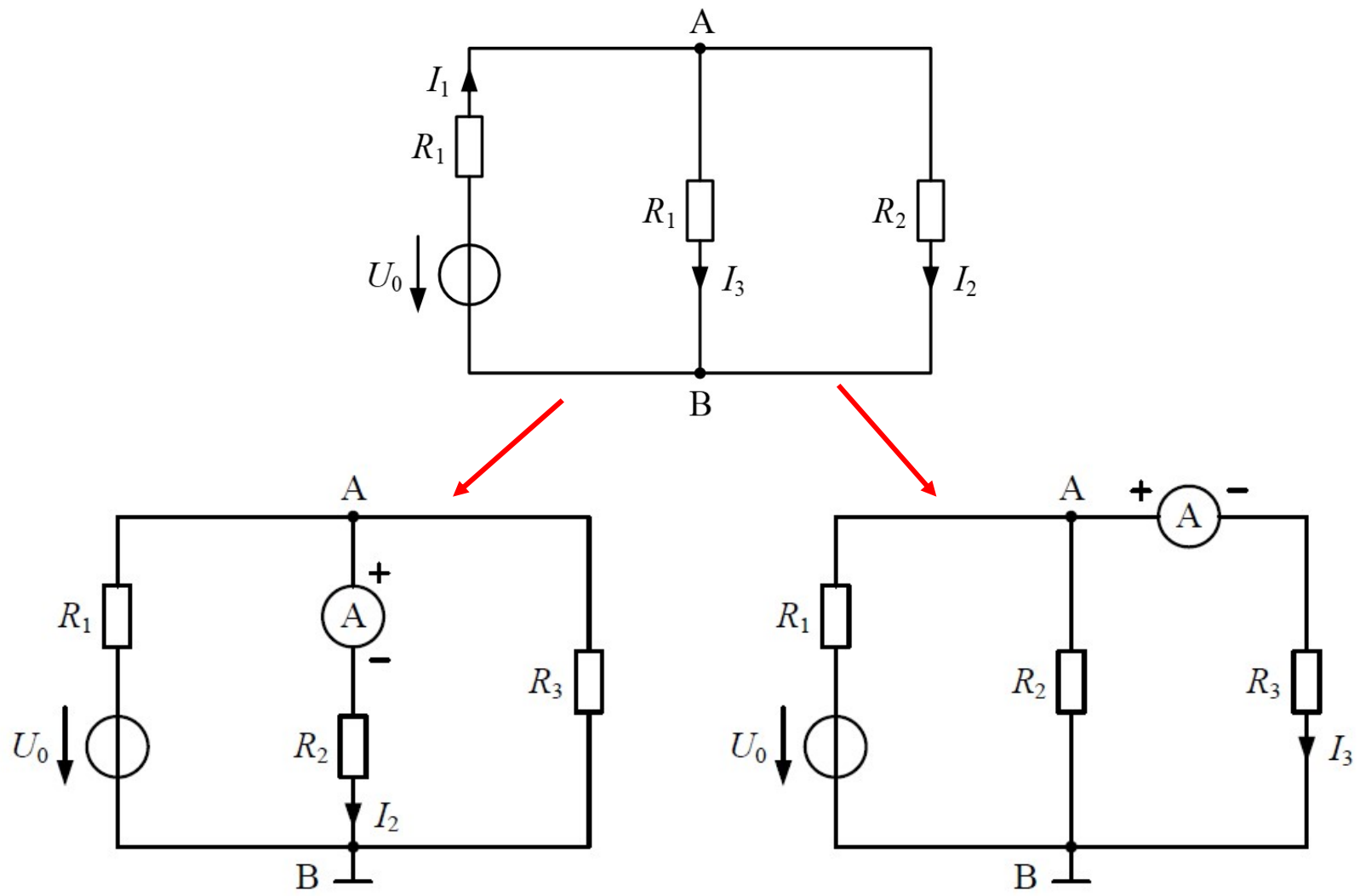
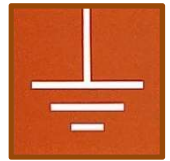
Montage 3



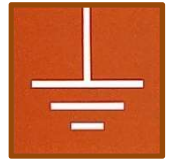
Montage 3



Montage 2



Directives



- À 10:00 au plus tard :
 - Laisser la place de travail en ordre
 - Éteindre tous les appareils
 - Ranger les câbles dans les tiroirs OU les suspendre
 - Déposer les boîtes rouges avec les composants sur les plateaux à l'entrée du labo.

BON TRAVAIL